



What if...

Nick Bostrom's 5 points of
"Superintelligence" all came true?

(1) AI (2) Whole Brain Emulation (3) Enhancement of our Biological Brain (4) Human Machine Interfaces (5) Networks and Organizations



What if...

The community of alternative societies expands drastically in response to economical and political crisis, and results in the rejection of technology?



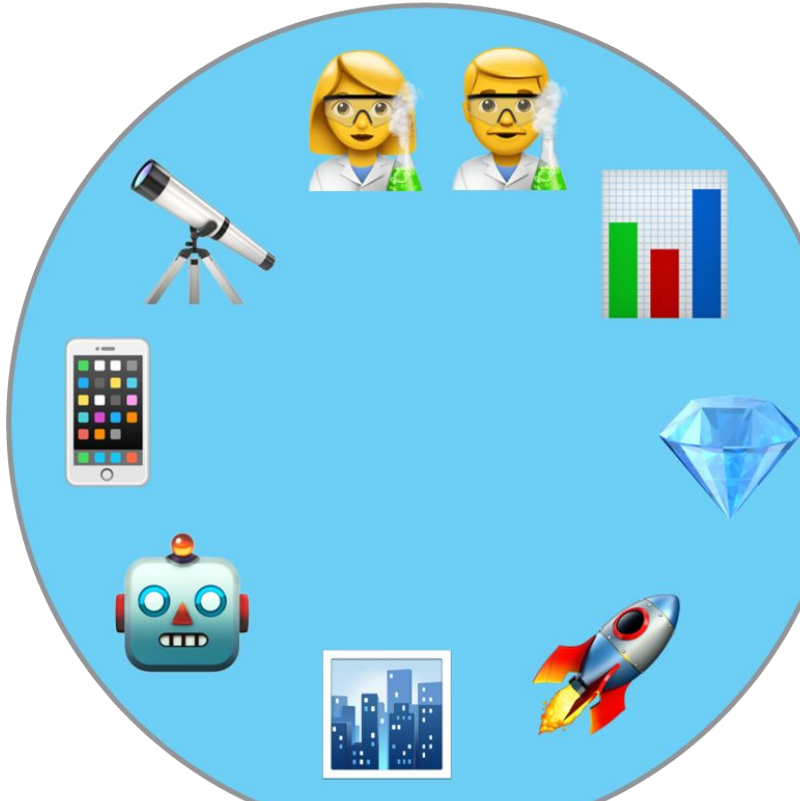
LIVE

BREAKING NEWS

15:35 CAROLINA FROM THE DESIGN FIRM THAT TRIES TO BRIDGE EXTREME BEING AND EXTREME DOING.

EXTREME DOING

Left brain, embraces high tech
Example: Superchicken



EXTREME BEING

Right brain, embraces nature
Example: Non-competitive





Extreme Being



Extreme Doing

Extreme Doing

1. **Technology** - Supercyborg tech (Superintelligence 5 paths)
2. **Government** - The Leah Collective, (also known as the Politically Integrated Global Network),
3. **Ethics** - Efficiency, Superproductivity, and Equality.
4. **Entertainment** - Augmented VR is an easy to access tool that lets you be transported wherever needed.
5. **Nature** - Polished sustainable and efficient superparks. (have led to an unfortunate superpest problem - still unresolved)



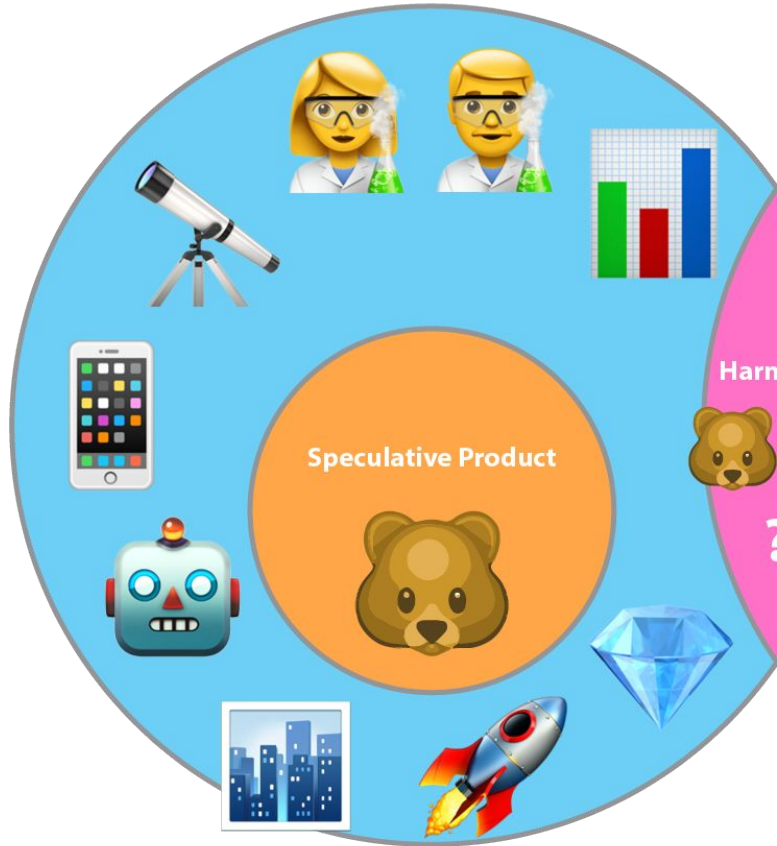
Extreme Being

1. **Technology** - should be used as little as possible.
2. **Government** - Decentralized and horizontal. Everyone has a voice. Rules are only suggested.
3. **Ethics** - Hyper compassion, life and now-ness is sacred and should be honored.
4. **Entertainment** - Liberal Arts, and activities that help connect with nature
5. **Nature** - is home. Found outside the outskirts of the ED world are the remnants of nature. Which EB cares for and protects



EXTREME DOING

Left brain, embraces high tech
Example: Superchicken



EXTREME BEING

Right brain, embraces nature
Example: Non-competitive





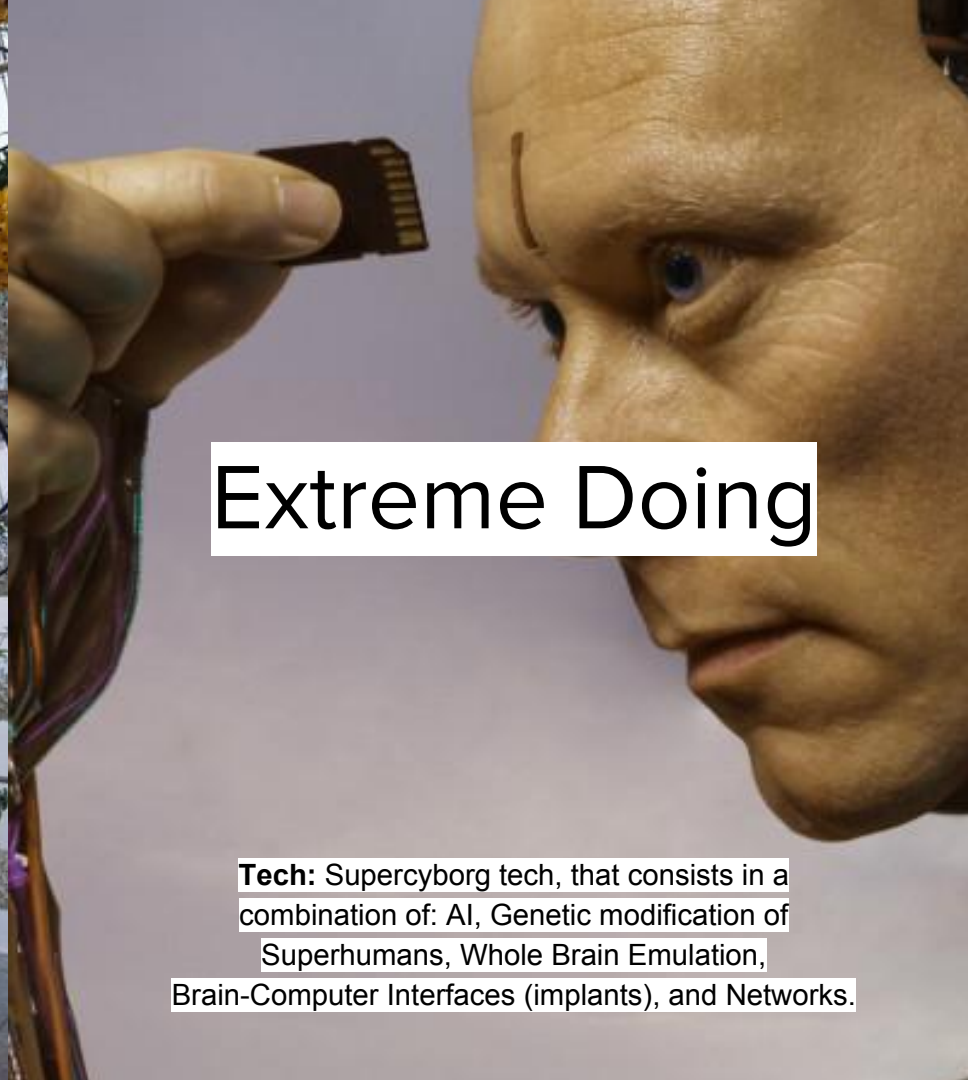
“Think left and think right and
think low and think high. Oh,
the things you can think if
you only try!”

- Theodor Geisel (Dr. Seuss)



Extreme Being

Tech: should be used as little as possible. Old solar panels and non-human translators are among the only tech this group uses.



Extreme Doing

Tech: Supercyborg tech, that consists in a combination of: AI, Genetic modification of Superhumans, Whole Brain Emulation, Brain-Computer Interfaces (implants), and Networks.

A photograph showing two individuals in a forest. One person is using a large hammer on a wooden block, while the other is using a chisel. The scene is lit with warm, golden light, suggesting a sunset or sunrise. The background shows tall trees and a misty atmosphere.

Extreme Being

Key words: Tibet Buddhism +
Christiana + Occupy + Conservative
tech Skeptics

A photograph of a modern, brightly lit interior space, possibly a data center or a futuristic office. Several people are seated at long tables, working on computer monitors. The room has a clean, minimalist design with white walls and a high ceiling. The lighting is cool and blue.

Extreme Doing

Key words: Dashboards + Quantitative &
formula based life + Superintelligence +
Super-sustainable cities



Extreme Being

Food: Engineered-free, grown in a permaculture garden with love and presence.



Extreme Doing

Food: Bio-engineered food with adequately balanced nutrients for all body types in different shapes, forms and tastes!

A group of approximately 15-20 people, including men, women, and children, are posed for a group photo in a sun-dappled forest. They are dressed in earthy, natural-looking clothing, some appearing to be made of animal skin or simple fabrics. The background is filled with tall, thin evergreen trees.

Extreme Being

Family: An open family that looks more like a big friendship circle, rather than a selected few.

A large crowd of people is seated in a stadium or arena at night. The scene is dimly lit, with the primary light source coming from the two brightly lit windows of a building in the background. The crowd is dense, filling the tiered seating area.

Extreme Doing

Family: Single person oriented lifestyle, where AI can offer emotional support, and children are given through a fair lottery.